

ATz-SF420ANAB

220V/50Hz

应用范围 application range

压缩机冷却方式 compressor cooling method	自然冷却	
蒸发温度范围 evaporating temperature	-15 °C~ 15 °C	5 °F~ 59 °F
冷凝温度范围 condensing temperature	27 °C~68 °C	80.6 °F~154.4 °F
排气温度 discharge temperature	115 °C以下	233.6 °F 以下
电机线圈温度 winding temperature	130 °C以下	266 °F 以下

额定性能 rated performance(基准电压 basic voltage: 220 V)

制冷能力 cooling capacity	<u>14350 W</u>	<u>48962 Btu/h</u>
输入功率 input power	<u>4450 W</u>	(60Hz)
电流 current	<u>8.1 A</u>	
能效比 EER	<u>3.25W/W</u>	<u>11.08 Btu/W-h</u>
噪声(声功率级) Noise (A weighed sound power)	<u>78 dB(A)</u>	(60Hz)
振动(切向加速度) Vibration (Tangential acceleration)	<u>10 m/s2</u>	

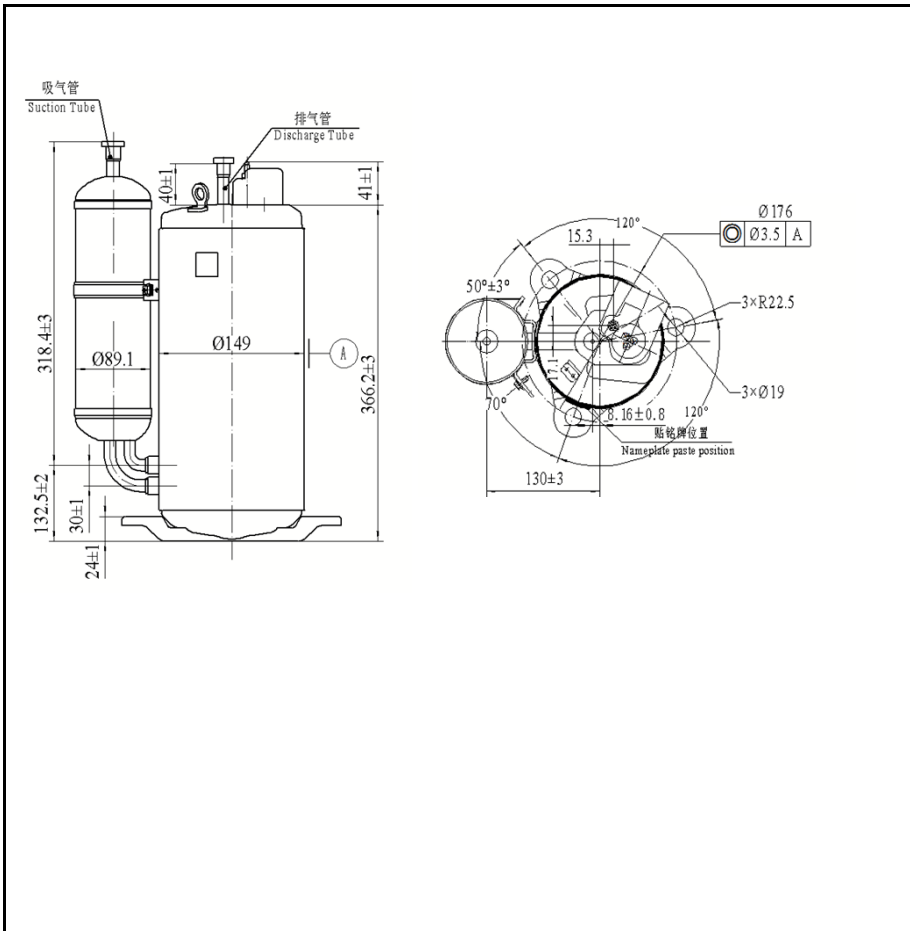
压缩机参数 compressor parameters

运转方式 rotation mode	<u>旋转压缩机</u>
排气量 displacement	<u>42 cc/rev</u>
注油量 oil charge	<u>1350 ml</u>
净重 net weight	<u>22.0 kg</u>
最大灌注量 max charge	<u>4000 g</u>

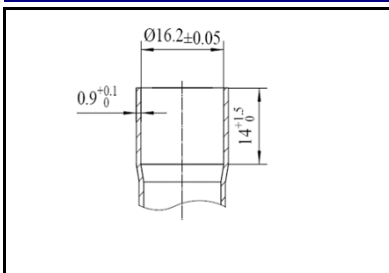
电机参数 motor parameters

电机类型 motor type	<u>永磁同步电机</u>
启动类型 starting type	<u>直流变频控制器</u>
极数 number of poles	<u>4</u>
磁通(线间) flux(inter-wire)	<u>706 mWb</u>
电压常数(线间) voltage constant(inter-wire)	<u>53.4 V/Krpm</u>
转动惯量 rotating Inertia	<u>1500 kg·mm²</u>

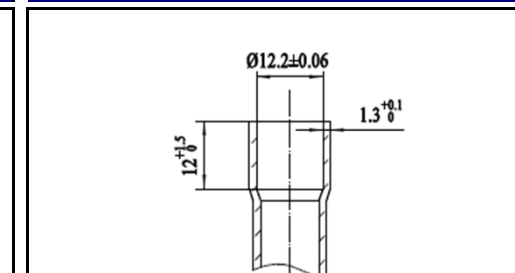
基本尺寸 basic dimensions



吸气管放大图
exagerated suction tube



排气管放大图
exagerated discharge tube



绕线电阻 (25°C) winding resistance
 UV绕组: 0.78 Ω
 VW绕组: 0.78 Ω
 WU绕组: 0.78 Ω

电感量测试结果 Inductance test result
 (测试频率 test frequency: 50Hz)

电流 current (A)	电感 Inductance (mH)	
	Ld	Lq
5	<u>5.36</u>	<u>9.01</u>
7.5	<u>5.35</u>	<u>8.69</u>
10	<u>5.31</u>	<u>8.35</u>

电压范围 voltage range (控制器内部PWM inside the inverter) DC 260-350 V

运转频率范围 operation frequency range 15 Hz ~ 120 Hz

退磁电流 (峰值) demag current (peak value) 45 A (130°C 环境下, 减磁率低于5%. demag rate is below 5% at 130°C)

控制器型号: A1000 控制器厂家: 安川
 controller type controller factory

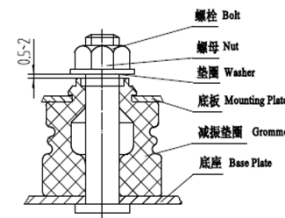
能力测试条件 capacity test conditions

蒸发温度 evap. temp.	<u>7.2</u> °C	45°F
冷凝温度 cond. temp.	<u>54.4</u> °C	130°F
吸气温度 suct. temp.	<u>35</u> °C	95°F
液体温度 liquid temp.	<u>46.1</u> °C	115°F
环境温度 amb. temp.	<u>35.0</u> °C	95°F

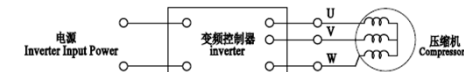
附件明细及过载信息 accesaries and overload info

零部件名称 description	图号 drawing number	物料代码 material code	净数量 quantity
接线柱护盖 terminal cover	<u>ZE7.852.006</u>	<u>18086002</u>	1
减振垫圈 C55 grommet C55	<u>ZE8.639.027</u>	<u>33010051</u>	3
绝缘垫 insulation gasket	<u>ZE8.683.069</u>	<u>33010107</u>	1
螺母 M5 nut	<u>GB/T6177.1</u>	<u>50010001</u>	1
过载保护器 (仅对外置过载) overload protector (only for external protector)	/	/	/

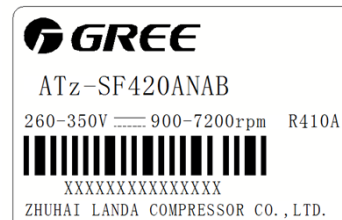
安装图 instalation drawing



接线图 wiring diagram



铭牌 name plate



编制: made by 罗瀛玉 审核: chekced by 丁学超 审定: reviewed by / 日期: date 2017.9.21

制冷能力和输入功率 cooling capacity and input power tolerance: ±3%.

简易规格书模板版本号 version of the brief specification : F

珠海凌达压缩机有限公司
 Zhuhai Landa Compressor Co., Ltd.

本压缩机规格说明书有效期至: 2017 年 12 月 21 日, 到期自动作废和失效。
 This compressor specification is valid till yy mm dd, and will be invalid automatically after expiration.



凌达旋转式压缩机规格说明书(外销变频)
Rotary Compressor Specification (Inverter for export)

版本号: version A

R410A

ATz-SF420ANAB

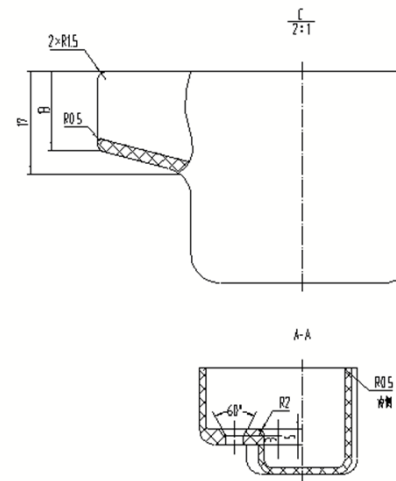
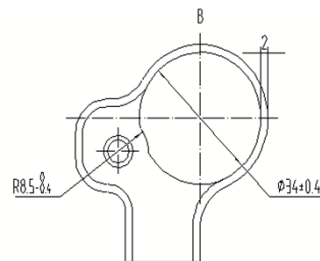
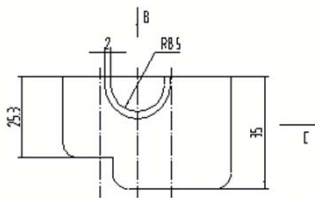
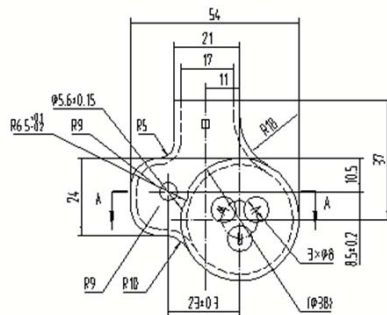
220V/50Hz

压缩机附件名称:
description of
accessary

接线柱护盖(三相
内置)

压缩机附件代号:
code of accessary

ZE7.852.006



技术要求
Specifications

1. 零件表面应光滑、无毛刺;
Part surfaces shall be smooth without burrs.
2. 零件颜色为黑色;
The part is black;
3. 零件所用材料:PBT-G10或PA66或PBT FG430.
The material of part is PBT-G10 or PA66 or PBT FG430.



凌达旋转式压缩机规格说明书(外销变频)
Rotary Compressor Specification (Inverter for export)

版本号: version A

R410A

ATz-SF420ANAB

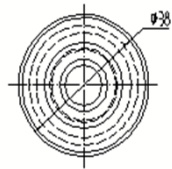
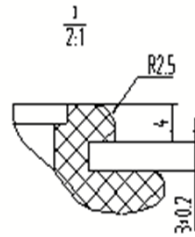
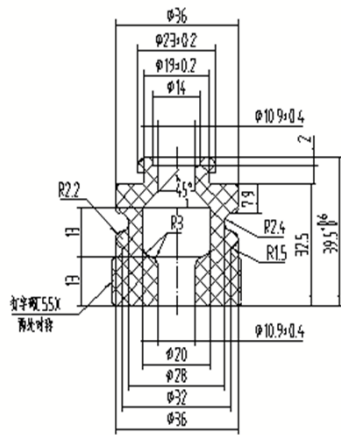
220V/50Hz

压缩机附件名称:
description of
accessary

减振垫圈1 C55

压缩机附件代号:
code of accessary

ZE8.639.027



技术要求
Specifications

1. 零件颜色为黑色;
The part is black;
2. 零件所用材料,三元乙丙橡胶;
The material of part is EPDM;
3. 零件硬度为Hs53±3°.
The hardness of part is Hs53±3°.

