

Air Conditioning and Refrigeration

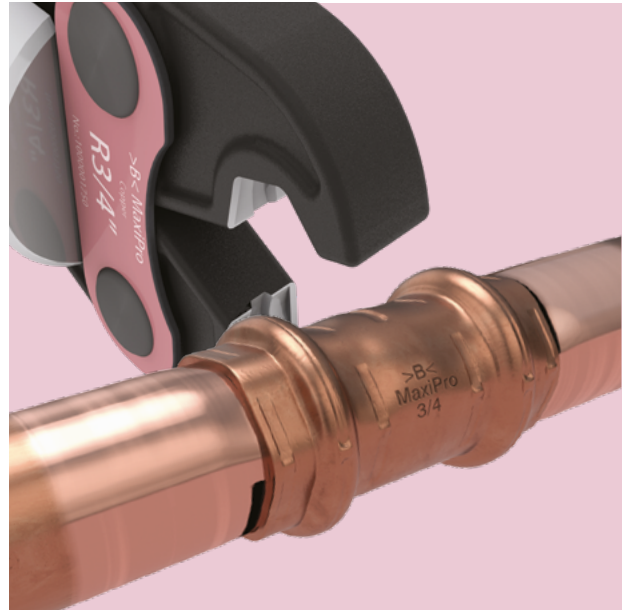
The innovative press-system for Air Conditioning and Refrigeration for operating pressures up to 48 bar.

An innovative press system, which is quick and simple to install, providing a secure and permanent joint. Designed for air conditioning and refrigeration applications up to 48 bar.

>B< MaxiPro can be used with hard, half hard or annealed copper tube conforming to EN 12735-1, EN 12735-2 or ASTM-B280*, in both air conditioning and refrigeration applications.

We recommend using tried and tested ROTHENBERGER tools and jaws - Romax Compact TT.

- ✓ Flame-free installation
- ✓ Secure 3-point press joint
- ✓ High quality HNBR-O-Ring
- ✓ Only 3 seconds per pressing
- ✓ No nitrogen purge
- ✓ Lower installation costs



NOTE:

To ensure a proper installation, a >B< MaxiPro training is required. For more information please contact our Sales Team.

>B< MaxiPro Starter Kit:

| Description | Dimension | Pieces |
|---|---------------|-----------|
| ROTHENBERGER ROMAX Compact TT presstool | | 1 |
| ROTHENBERGER >B< MaxiPro jaws | 1/4" - 1 1/8" | 1 of each |
| ROTHENBERGER universal deburrer | | 1 |
| ROTHENBERGER TC35-rotary cutter | | 1 |
| ROTHENBERGER Unigrat pencil deburrer | | 1 |
| ROTHENBERGER ROVLIES cleaning pads | | 1 PU |
| ROTHENBERGER ROCASE tool case | | 1 |
| ROTHENBERGER ROCASE tool case for jaws | | 1 |
| >B< MaxiPro depth gauge with marker | | 1 |
| >B< MaxiPro Coupler | 3/8" | 15 |
| >B< MaxiPro Coupler | 1/2" | 15 |
| >B< MaxiPro Coupler | 5/8" | 15 |
| >B< MaxiPro Elbow 90° | 3/8" | 15 |
| >B< MaxiPro Elbow 90° | 1/2" | 15 |
| >B< MaxiPro Elbow 90° | 5/8" | 15 |

