



# TETN100U

Tipo di sbrinamento **A gas caldo** • Defrost type **By hot gas**

DATI TECNICI **UNITA'** • TECHNICAL DATA **UNIT**

	Forma Form	Tensione Voltage	Massimo assorb. elettrico in marcia Max. elec. absorp. in running condition kW	Tipo compressore Compressor type	Volume spostato Displacement		Assorbimento in sbrinamento Absorption during defrost kW	Quantità refrigerante Refrigerant quantity kg
		V/ph/Hz			m <sup>3</sup> /h - 50Hz	m <sup>3</sup> /h - 60Hz		
<b>TETN100U</b>	1	230/1/50	1,24	E	3,90	4,70	1,30	0,13

E = Ermetico • Hermetic

**CONDENSATORE • CONDENSER**

	Passo alette Fin pitch	Ventilatori Fans	Assorb. ventilatori Fan absorption	Portata aria Airflow
	mm	n°xØ mm	n°xW	m <sup>3</sup> /h
<b>TETN100U</b>	3,2	1x254	1x32	720

**EVAPORATORE • EVAPORATOR**

	Passo alette Fin pitch	Ventilatori Fans	Assorb. ventilatori Fan absorption	Portata aria Airflow	Freccia aria Air-throw
	mm	n°xØ mm	n°xW	m <sup>3</sup> /h	m
<b>TETN100U</b>	4,2	1x230	1x24	600	6

**Potenza frigorifera • Refrigerating capacity (W) - Volume cella • Room volume (m<sup>3</sup>)**



Temperatura cella • Cold room temperature

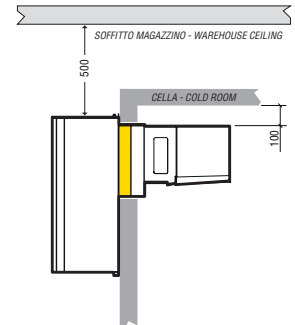
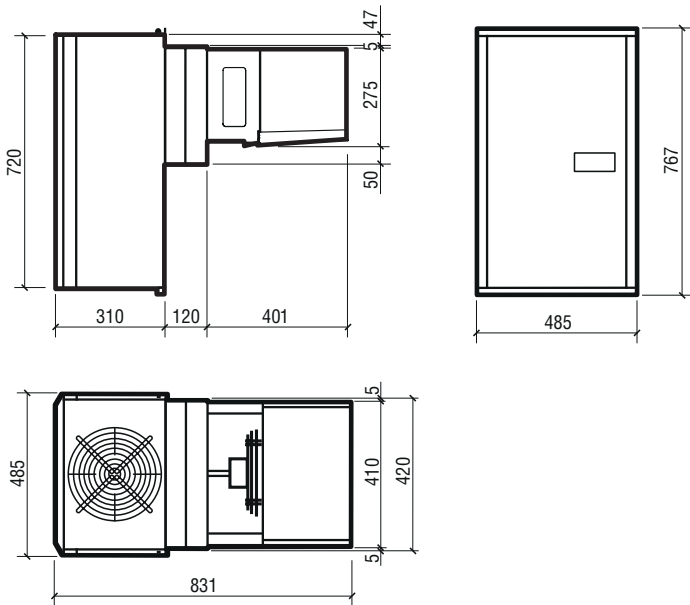
+ 5°C	0°C	- 5°C
-------	-----	-------



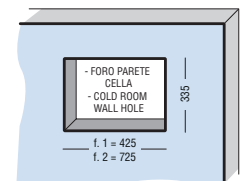
Temperatura esterna • Ambient temperature

	+ 32 °C		+ 43 °C		+ 32 °C		+ 43 °C		+ 32 °C		+ 43 °C	
	W	m <sup>3</sup>	W	m <sup>3</sup>	W	m <sup>3</sup>	W	m <sup>3</sup>	W	m <sup>3</sup>	W	m <sup>3</sup>
<b>TETN100U</b>	2028	20	1708	16	1762	14	1563	11	1553	10	1316	8

**FORMA • FORM 1**



MONTAGGIO  
MOUNTING



**Techno-B s.r.l.**

via Cantelma, 11 • 42045 Codisotto di Luzzara (RE) • ITALY  
 Tel. +39-0522-978400 (4 r.a.) • Fax +39-0522-978362

info@technob.it • www.technob.it